

**AMERICAN AVK HIGH PRESSURE, 250 PSI, NOSTALGIC,
DUAL 2 1/2" HOSE OUTLET, DRY BARREL HYDRANT**

2794

NOSTALGIC DUAL HOSE OUTLET

Meets or exceeds AWWA C502 (latest) - Working Pressure - 250 PSI

Inlet Bases: Flanged in accordance with ANSI B16.1 Class 125,

Mechanical and Push-On Joint in accordance with ANSI/AWWA C111/A21.11

Use:

For water and neutral liquids to maximum 160°F.

Approvals:
FM Approved



Tests:

Hydraulic test to AWWA C502:

Seat Test: 500 PSI

Components:

Nozzle Section, Bonnet, Barrels, Standpipe Flanges,
Breakable Flange, Main Valve Flange, Base,

Caps, Weathershield

Nozzles, Valve Seat Ring, Drain Ring
Operating Nut, Thrust Nut

Brass Fittings, Brass Plugs

Main Valve

Stem Rod Couplings, Lock Rings, Nozzle Retaining
Screw, Lock Plate, Lock Plate Screw, Spider Bolt, Stop Pins,
Coupler Pins, Main Valve Retaining Pin, Spring Pins,

Coating

Stop Nut, Chain Set, Hardware

Barrel Gasket, Cap Gasket, O-rings

Lubrication Hole Seal

Anti-Friction Washer

Base Elbow / Inlet Configuration

6" MJ

4" MJ

8" MJ*

*Not FM Approved

Standard:

Ductile Iron ASTM A536

Cast Iron ASTM A126 Class "B"

Bronze

Brass

Ductile iron core, fully encapsulated with EPDM rubber.

Stainless Steel

Above ground-Fusion bonded epoxy inside and out. Below
ground - Bitumen/Fusion bonded epoxy. Epoxy meets or
exceeds AWWA C550 (latest)

Zinc Plated Steel

NBR - (Barrel Gasket with 304 stainless insert)

Oil Resistant Rubber

Polyamide

6" Flanged

4" Flanged

Straight Flanged 6"

6" Push-on

4" PE*

6" PE*

Optional Materials:

Hardware

Upper Stem Rod

Lower Stem Rod

Zinc Plated

304 Stainless

304 Stainless

304 Stainless

Epoxy Coated Steel

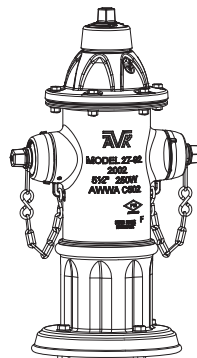
Epoxy Coated Steel

316 Stainless

Opening Direction

Open Left

Open Right



American AVK Company
an ISO 9001-2000 registered company

DS S2794 NOSTALGIC DUAL HOSE OUTLET
Subject to change without notice. (rev. 12/07)

Series 2794, 2 Hose Outlet

**AMERICAN AVK HIGH PRESSURE, 250 PSI, NOSTALGIC,
DUAL 2 1/2" HOSE OUTLET, DRY BARREL HYDRANT**

2794

NOSTALGIC DUAL HOSE OUTLET

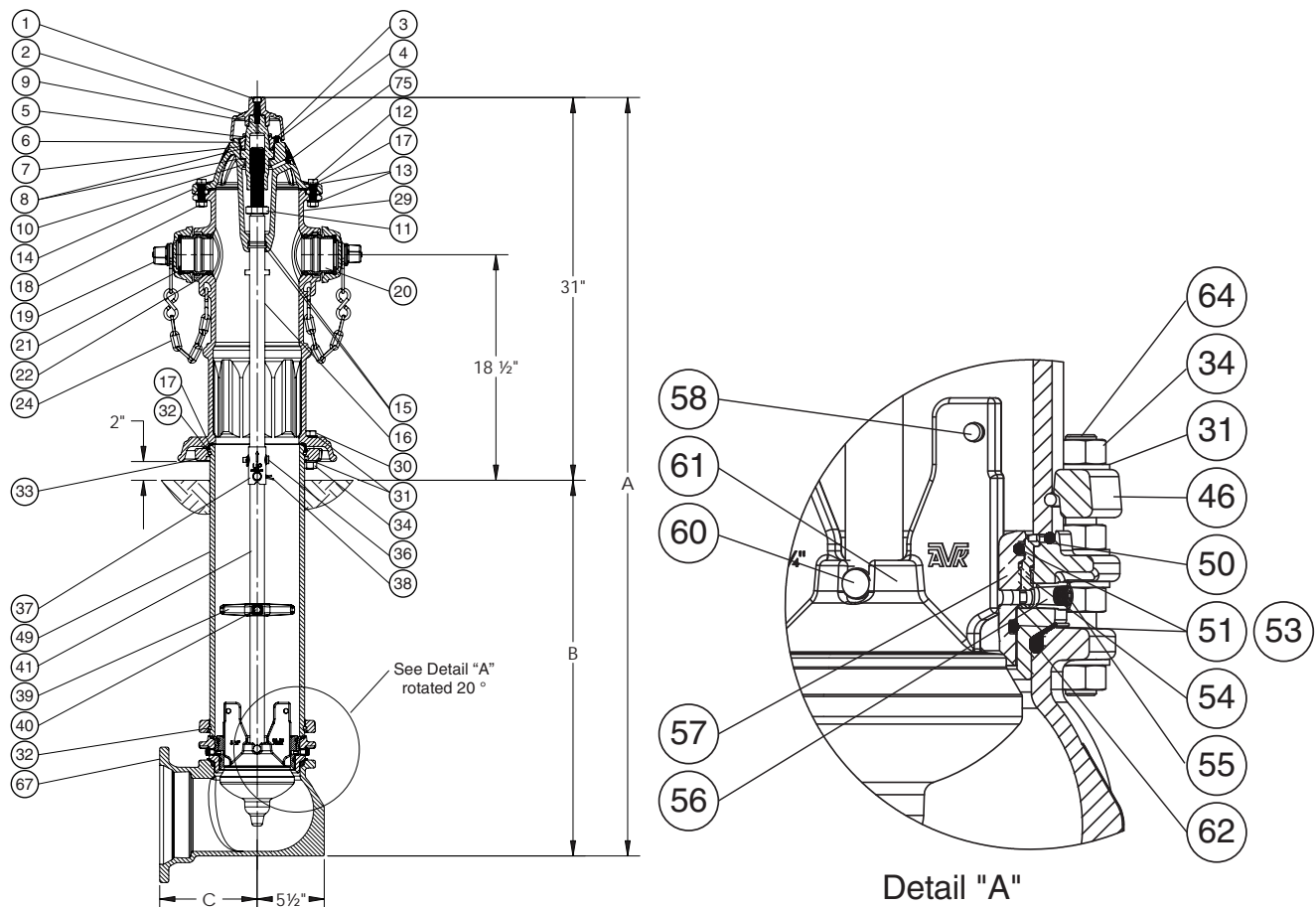
Meets or exceeds AWWA C502 (latest) - Working Pressure - 250 PSI

Inlet Bases: Flanged in accordance with ANSI B16.1 Class 125,

Mechanical and Push-On Joint in accordance with ANSI/AWWA C111/A21.11

Component List:

- | | | | |
|----------------------------|----------------------------|----------------------------------|---------------------------------|
| 1. Weathershield Bolt | 16. Upper Stem Rod | 36. Coupler Pin | 57. Main Valve Flange -Detail A |
| 2. Weathershield | 17. Barrel Gasket | 37. Breakable Stem Rod | 58. Stop Pin -Detail A |
| 3. Lock Plate Screw | 18. Bonnet Nut | 38. Spring Pin | 60. Main Valve Retaining Pin |
| 4. Lock Plate | 19. Hose Nozzle Cap | 39. Spider | -Detail A |
| 5. Inner Thrust Nut O-ring | 20. Hose Nozzle | 40. Spider Bolt | 61. Main Valve Disc -Detail A |
| 6. Thrust Nut | 21. Hose Nozzle Cap Gasket | 41. Lower Stem Rod | 62. Base Gasket -Detail A |
| 7. Outer Thrust Nut O-ring | 22. Hose Nozzle O-ring | 46. Standpipe Flange -Detail A | 64. Stud Bolt -Detail A |
| 8. Anti-Friction Washer | 23. Nozzle Retaining Screw | 49. Lower Barrel | 67. Base |
| 9. Lubrication Hole Seal | 24. Chain Set | 50. Lower Barrel O-ring Detail A | 75. Zerk Fitting |
| 10. Operating Nut | 29. Nozzle Section | 51. Valve Seat O-ring -Detail A | |
| 11. Stop Nut | 30. Nozzle Section Bolt | 53. Valve Seat O-ring -Detail A | |
| 12. Bonnet Bolt | 31. Nozzle Section Washer | 54. Drain Ring -Detail A | |
| 13. Bonnet Washer | 32. Lock Ring | 55. Brass Plug -Detail A | |
| 14. Bonnet | 33. Breakable Flange | 56. Brass Fitting -Detail A | |
| 15. Stem Seal O-rings | 34. Nozzle Section Nut | | |



Ref No.	Outlets	A	B*	C Flanged	C MJ	C Push-on	C PE
27-94 - 4"	2x2 1/2"	49" - 247"	18" - 216"	8.00"	8.00"	N/A	23.70"
27-94 - 6"	2x2 1/2"	49" - 247"	18" - 216"	8.00"	8.00"	9.00"	22.80"
27-94 - 8"	2x2 1/2"	49" - 247"	18" - 216"	N/A	9.38"	N/A	N/A

* Buries greater than 216" available upon request.

