

**AMERICAN AVK HIGH PRESSURE, 250 PSI, MODERN,
DRY BARREL HYDRANT, WITH MONITOR ELBOW - 27CA - 4", 27CE - 3"**

**27CA/CE
MONITOR**

Meets or exceeds AWWA C502 (latest) - Working Pressure - 250 PSI

Inlet Bases: Flanged in accordance with ANSI B16.1 Class 125,

Mechanical and Push-On Joint in accordance with ANSI/AWWA C111/A21.11

Use:

For water and neutral liquids to maximum 160°F.

Tests:

Hydraulic test to AWWA C502:

Seat Test: 500 PSI

Approvals:
UL/ULC Listed,
FM Approved



Components:

Nozzle Section, Bonnet, Barrels, Standpipe Flanges,
Breakable Flange, Main Valve Flange, Base, Monitor Elbow

Caps, Weathershield

Nozzles, Valve Seat Ring, Drain Ring
Operating Nut, Thrust Nut

Brass Fittings, Brass Plugs

Main Valve

Stem Rod Couplings, Lock Rings, Nozzle Retaining
Screw, Lock Plate, Lock Plate Screw, Spider Bolt, Stop Pins,
Coupler Pins, Main Valve Retaining Pin, Spring Pins,

Coating

Stop Nut, Chain Set, Hardware

Barrel Gasket, Cap Gasket, O-rings

Lubrication Hole Seal

Anti-Friction Washer

Base Elbow / Inlet Configuration

6" MJ

4" MJ

8" MJ*

Standard:

Ductile Iron ASTM A536

Cast Iron ASTM A126 Class "B"

Bronze

Brass

Ductile iron core, fully encapsulated with EPDM rubber.

Stainless Steel

Above ground - Fusion bonded epoxy inside and out. Below
ground - Bitumen/Fusion bonded epoxy. Epoxy meets or
exceeds AWWA C550 (latest)

Zinc Plated Steel

NBR - (Barrel Gasket with 304 stainless insert)

Oil Resistant Rubber

Polyamide

6" Flanged

4" Flanged

Straight Flanged 6"

6" Push-on

4" PE*

6" PE*

*Not UL/ULC Listed or FM Approved

Optional Materials:

Hardware

Upper Stem Rod

Lower Stem Rod

Zinc Plated

304 Stainless

304 Stainless

304 Stainless

Epoxy Coated Steel

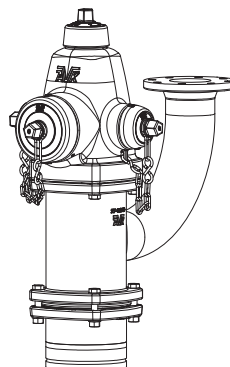
Epoxy Coated Steel

316 Stainless

Opening Direction

Open Left

Open Right



American AVK Company
an ISO 9001-2000 registered company

Series 27CA/CE with Monitor Elbow
1 Pumper, 2 Hose Outlet

DS S27CA/CE MONITOR
Subject to change without notice. (rev. 12/07)

AMERICAN AVK HIGH PRESSURE, 250 PSI, MODERN, DRY BARREL HYDRANT WITH MONITOR ELBOW - 27CA - 4", 27CE - 3"

**27CA/CE
MONITOR**

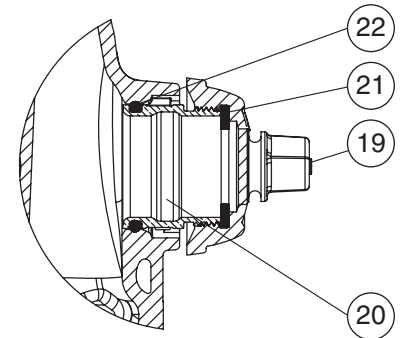
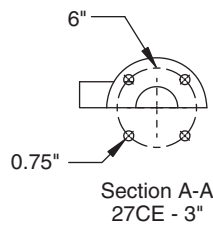
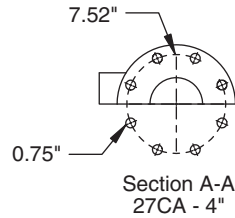
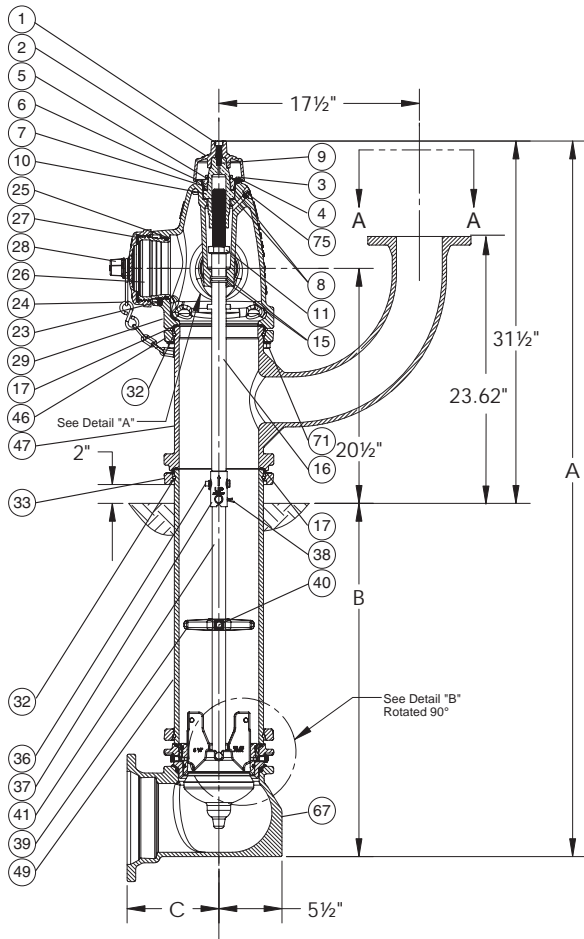
Meets or exceeds AWWA C502 (latest) - Working Pressure - 250 PSI

Inlet Bases: Flanged in accordance with ANSI B16.1 Class 125,

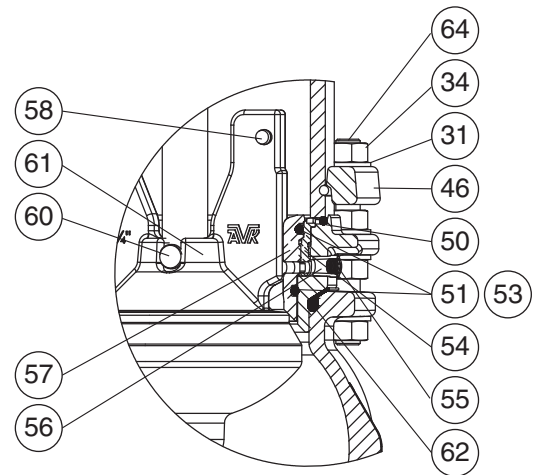
Mechanical and Push-On Joint in accordance with ANSI/AWWA C111/A21.11

Component List:

- | | | | |
|-------------------------------|--------------------------------------|----------------------------------|--|
| 1. Weathershield Bolt | 20. Hose Nozzle -Detail A | 36. Coupler Pin | 56. Brass Fitting -Detail B |
| 2. Weathershield | 21. Hose Nozzle Cap Gasket -Detail A | 37. Breakable Stem Rod Coupling | 57. Main Valve Flange -Detail B |
| 3. Lock Plate Screw | 22. Hose Nozzle O-ring - Detail A | 38. Spring Pin | 58. Stop Pin -Detail B |
| 4. Lock Plate | 23. Nozzle Retaining Screw | 39. Spider | 60. Main Valve Retaining Pin -Detail B |
| 5. Inner Thrust Nut O-ring | 24. Chain Set | 40. Spider Bolt | 61. Main Valve Disc -Detail B |
| 6. Thrust Nut | 25. Pumper Nozzle O-ring | 41. Lower Stem Rod | 62. Base Gasket -Detail B |
| 7. Outer Thrust Nut O-ring | 26. Pumper Nozzle | 46. Standpipe Flange -Detail B | 64. Stud Bolt -Detail B |
| 8. Anti-Friction Washer | 27. Pumper Nozzle Gasket | 47. Monitor Elbow | 67. Base |
| 9. Lubrication Hole Seal | 28. Pumper Nozzle Cap | 49. Lower Barrel | 71. Modern Nozzle Section Bolt |
| 10. Operating Nut | 29. Nozzle Section | 50. Lower Barrel O-ring Detail B | 75. Zerk Fitting |
| 11. Stop Nut | 30. Nozzle Section Bolt- not shown | 51. Valve Seat O-ring -Detail B | |
| 15. Stem Seal O-rings | 31. Nozzle Section Washer | 53. Valve Seat O-ring -Detail B | |
| 16. Upper Stem Rod | 32. Lock Ring | 54. Drain Ring -Detail B | |
| 17. Barrel Gasket | 33. Breakable Flange | 55. Brass Plug -Detail B | |
| 19. Hose Nozzle Cap -Detail A | 34. Nozzle Section Nut | | |



Detail "A"



Detail "B"

Ref No.	Outlets	A	B*	C	C	C	C
				Flanged	MJ	Push-on	PE
27-00 - 4"	2x2 1/2", 1x4 1/4"	49.50" - 242.50"	18" - 216"	8.00"	8.00"	N/A	23.70"
27-00 - 6"	2x2 1/2", 1x4 1/4"	49.50" - 242.50"	18" - 216"	8.00"	8.00"	9.00"	22.80"
27-00 - 8"	2x2 1/2", 1x4 1/4"	49.50" - 242.50"	18" - 216"	N/A	9.38"	N/A	N/A



* Buries greater than 216" available upon request.