

**AMERICAN AVK RESILIENT SEATED DUCTILE IRON GATE VALVE**  
**Tested to AWWA C509 / C515 (NRS) for Indicator Post**  
**Mechanical Joint by Flanged Ends to ANSI B16.1 Class 125 - Valve Sizes 3" - 16"**

**45/30X**  
**MJxFL PIV**

**Use:**

For water and neutral liquids to maximum 160°F.

**Tests:**

Hydraulic test to AWWA C509:

Shell Test: 500 PSI 3"-12", 400 PSI 14"-16"

Seat Test: 250 PSI 3"-12", 200 PSI 14"-16"

Operating Torque Test

**Optional Materials:**

Stem	3"-12" only Stainless steel AISI 430F Stainless steel AISI 304 Stainless steel AISI 316
Bonnet Bolts	3"-12" only Stainless steel AISI 304, Stainless steel AISI 316, Zinc Plated steel sealed with hot melt
Gland Bolts	3"-12" only Stainless steel AISI 316, Zinc Plated steel

**Standard Materials:**

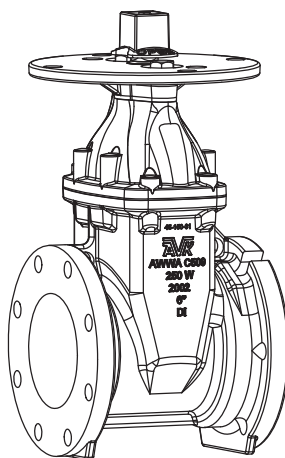
Body, Bonnet, Post Indicator Plate, Wrench Nut	Ductile iron ASTM A536 (Wrench Nut-painted black for open left, red for open right)
Coating	Electrostatically applied fusion- bonded epoxy-resin Meets or exceeds AWWA C550
Stem	3"-12" Standard: Low Zinc Bronze ASTM B763 14"-16" Standard: Aluminum Bronze ASTM B150
Anti Friction Washers	Polyamide
Wedge	Ductile iron ASTM A536 encapsulated with EPDM-rubber compound
Wedge Nut, Thrust Collar	Bronze
Bonnet Bolts	3" - 8" Stainless Steel - 304 sealed with hot melt 10"-16" High strength bolts sealed with hot melt
Gland Bolts	Stainless Steel - 304 Hexagon bolt
Bonnet Gasket, Wiper Ring, O-Ring Stem Seals, O-Ring Gland Seal	ASTM D2000 Buna "N" nitrile rubber

**Approvals:**



\*UL/ULC Listed  
 \*FM Approved  
 NSF-61 (audited by UL)

\* Approved at 250 PSI working pressure, 3"-12"  
 \* Approved at 200 PSI working pressure, 14"-16"



American AVK Company  
 an ISO 9001 registered company

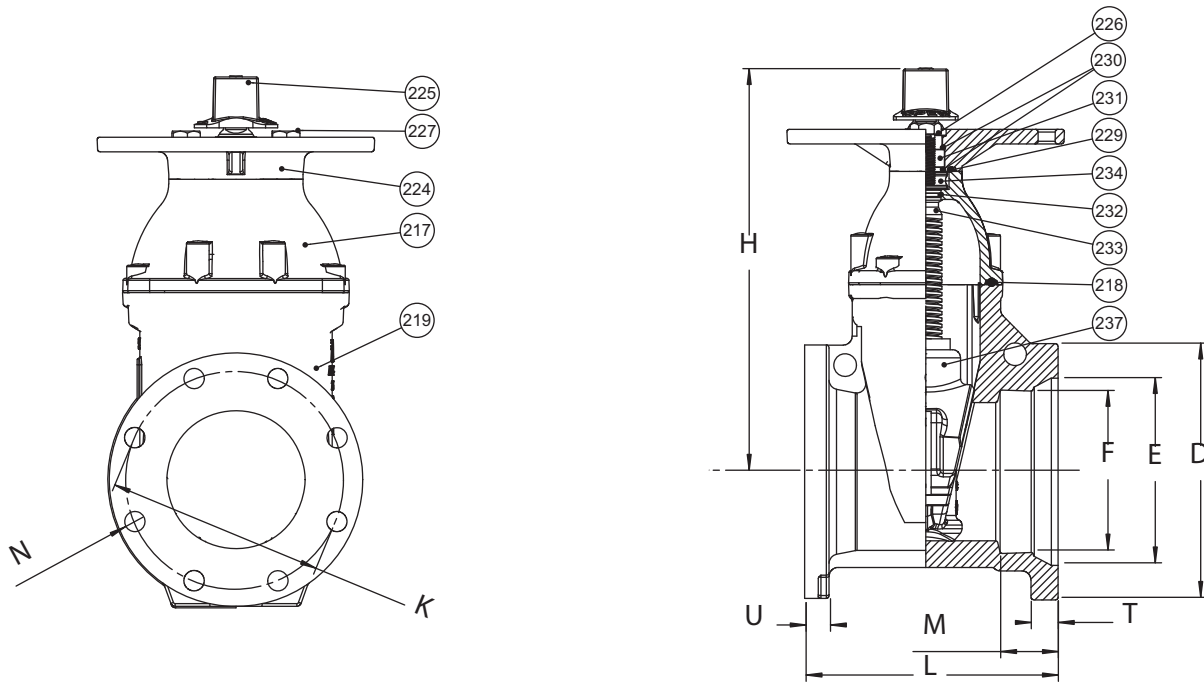
DS S4530X MJFL PIV  
 Subject to change without notice. (rev. 09/11)

**AMERICAN AVK RESILIENT SEATED DUCTILE IRON GATE VALVE**  
**Tested to AWWA C509 / C515 (NRS) for Indicator Post**  
**Mechanical Joint by Flanged Ends to ANSI B16.1 Class 125 - Valve Sizes 3" - 16"**

**45/30X**  
**MJxFL PIV**

**Component List:**

- |                           |                              |                             |
|---------------------------|------------------------------|-----------------------------|
| 217. Bonnet               | 226. Wiper Ring              | 232. Lower Stem Seal O-Ring |
| 218. Bonnet Gasket        | 227. Gland Flange Bolt       | 235. Anti-Friction Washer   |
| 219. Body                 | 229. Gland O-Ring            | 236. Low Zinc NRS Stem      |
| 224. Post Indicator Plate | 230. Upper Stem Seal O-Rings | 237. Wedge                  |
| 225. Wrench Nut           | 231. Stem Seal Bushing       |                             |



Ref No.	Size	D	E	F	K	H	L	M	N	T	U	Flange Holes	Turns to Open	Weight (lbs.)
45-080-30X	3"	7.69"	4.96"	4.08"	6.00"	12.09"	9.0"	2.50	0.75"	1.00"	0.88"	4	12	63
45-100-30X	4"	9.12"	6.02"	4.90"	7.50"	13.50"	9.0"	2.50	0.75"	1.00"	1.00"	8	14	82
45-150-30X	6"	11.12"	8.12"	7.00"	9.50"	17.30"	10.50"	2.50	0.88"	1.18"	1.06"	8	21	123
45-200-30X	8"	13.37"	10.27"	9.15"	11.75"	21.50"	11.50"	2.50	0.88"	1.24"	1.14"	8	26	175
45-250-30X	10"	15.69"	12.34"	11.20"	14.25"	24.75"	13.00"	2.50	1.00"	1.14"	1.22"	12	32	260
45-300-30X	12"	17.88"	14.44"	13.30"	17.00"	27.63"	14.00"	2.50	1.00"	1.22"	1.30"	12	38	357
45-350-30X	14"	20.31"	16.61"	15.50"	18.75"	35.75"	17.50"	3.50	1.13"	1.32"	1.40"	12	51	860
45-400-30X	16"	22.56"	18.64"	16.12"	21.25"	34.75"	17.00"	3.50	1.13"	1.34"	1.44"	16	51	860

