

**AMERICAN AVK RESILIENT SEATED DUCTILE IRON GATE VALVE**  
**250 PSI, Tested to AWWA C509 / C515 (NRS) CWP Tested to 350 PSI**  
**Flanged x Flanged Ends to ANSI B16.1 Class 250 - Valve Sizes 4" - 12"**  
**Laylength to ASME B16.10**

**45/4X**  
**FLxFL**

**Use:**  
 For water and neutral liquids to maximum 160°F.

**Tests:**  
 Hydraulic test to AWWA C509:  
 Shell Test: 500 PSI  
 Seat Test: 250 PSI  
 Hydraulic test CWP (Cold Working Pressure):  
 Shell Test: 525 PSI  
 Seat Test: 350 PSI  
 Operating Torque Test


**Optional Materials:**

Stem	Option a): Low zinc bronze ASTM B763
Anti Friction Washers	Polyamide
Bonnet Bolts	Option a): ASTM A164 zinc coated steel sealed with hot melt  Option b): Stainless Steel - 316 sealed with hot melt
Gland Bolts	Option a): ASTM A164 zinc coated steel Hexagon bolt  Option b): Stainless Steel - 316 Hexagon bolt

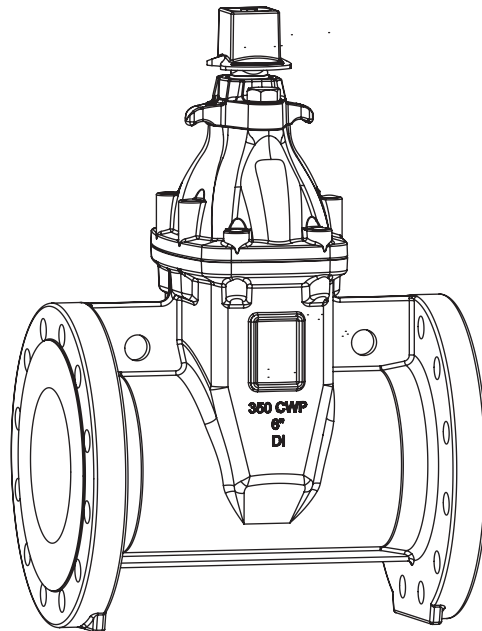
**Standard Materials:**

Body, Bonnet, Gland Flange, Wrench Nut	Ductile iron ASTM A536 (Wrench Nut-painted black for open left, red for open right)
Coating	Electrostatically applied fusion- bonded epoxy-resin Meets or exceeds AWWA C550
Stem	Standard: Stainless steel ASTM A582
Wedge	Ductile iron ASTM A536 encapsulated with EPDM-rubber compound
Wedge Nut, Thrust Collar	Bronze
Bonnet Bolts	Stainless Steel - 304 sealed with hot melt
Gland Bolts	Stainless Steel - 304 Hexagon bolt
Bonnet Gasket, Wiper Ring, O-Ring Stem Seals, O-Ring Gland Seal	ASTM D2000 Buna "N" nitrile rubber

**Approvals:**

\*UL/ULC Listed,  
 \*FM Approved  
 \* Approved at 250 PSI working pressure

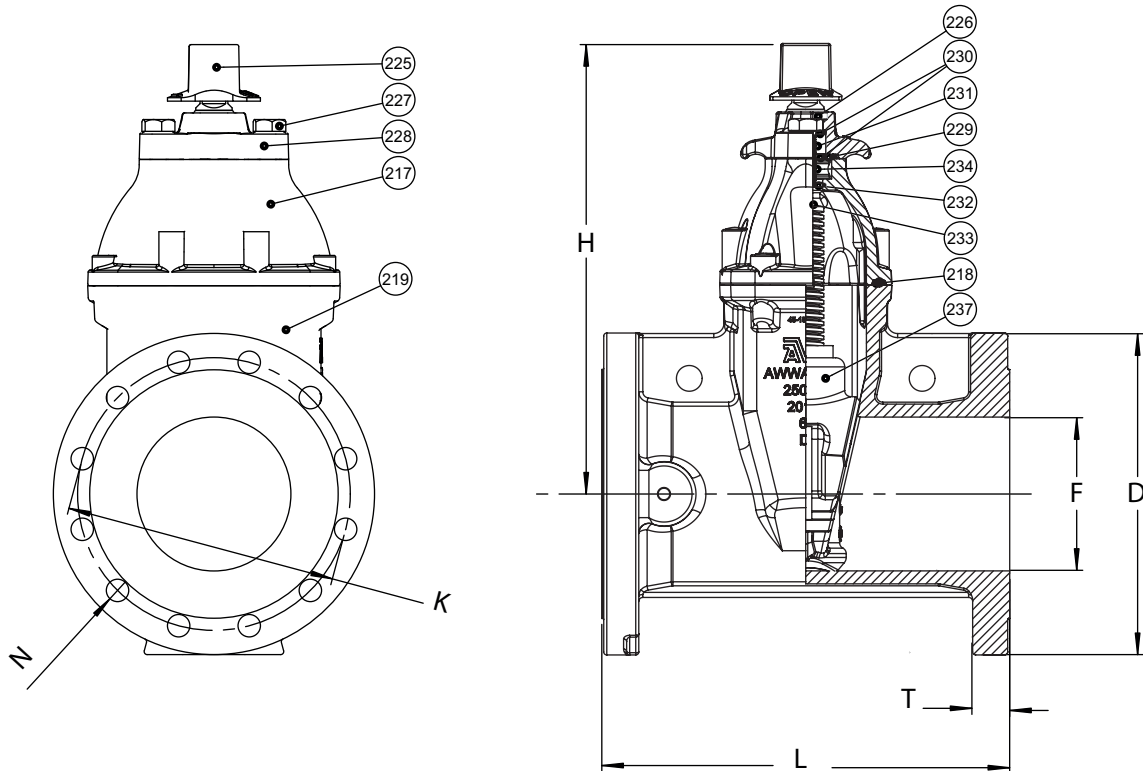


**AMERICAN AVK RESILIENT SEATED DUCTILE IRON GATE VALVE**  
**250 PSI, Tested to AWWA C509 / C515 (NRS) CWP Tested to 350 PSI**  
**Flanged x Flanged Ends to ANSI B16.1 Class 250 - Valve Sizes 4" - 12"**  
**Laylength to ASME B16.10**

**45/4X**  
**FLxFL**

**Component List:**

217. Bonnet	227. Gland Flange Bolt	232. Lower Stem Seal O-Ring
218. Bonnet Gasket	228. Gland Flange	233. NRS Stem
219. Body	229. Gland O-Ring	234. Thrust Collar
225. Wrench Nut	230. Upper Stem Seal O-Rings	237. Wedge
226. Wiper Ring	231. Stem Seal Bushing	



RefNo.	Size	D	F	H	K	L	N	T	Flange Holes	Turns to Open	Weight Lbs.
45-100-41X	4"	10.00"	4.00"	13.50"	7.88"	12.00"	0.88"	1.25"	8	14	91
45-150-41X	6"	12.50"	6.00"	17.50"	10.63"	15.88"	0.88"	1.44"	12	21	161
45-200-41X	8"	15.00"	8.00"	21.50"	13.00"	16.50"	1.00"	1.62"	12	26	244
45-250-41X	10"	17.50"	10.00"	24.75"	15.25"	18.00"	1.12"	1.88"	16	32	366
45-300-41X	12"	20.50"	12.00"	27.75"	17.75"	19.76"	1.25"	2.00"	16	38	541

